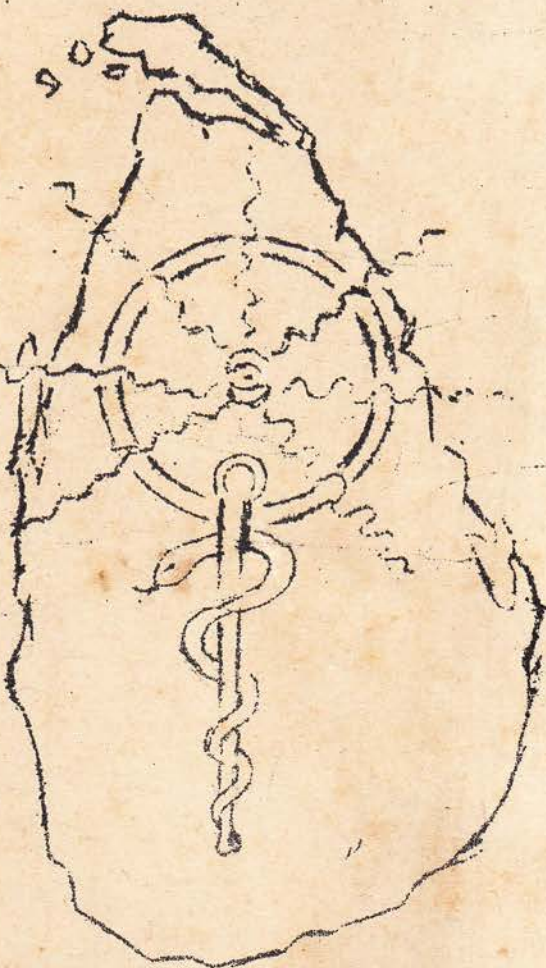


Administration Report

1989

Sexually Transmitted Diseases Control Programme



SRI-LANKA

ADMINISTRATION REPORT OF
SEXUALLY TRANSMITTED
DISEASES/AIDS CONTROL
PROGRAMME
SRI LANKA

Dr. G.N. Jayakuru, Consultant Venereologist

Director

STD/AIDS CONTROL PROGRAMME

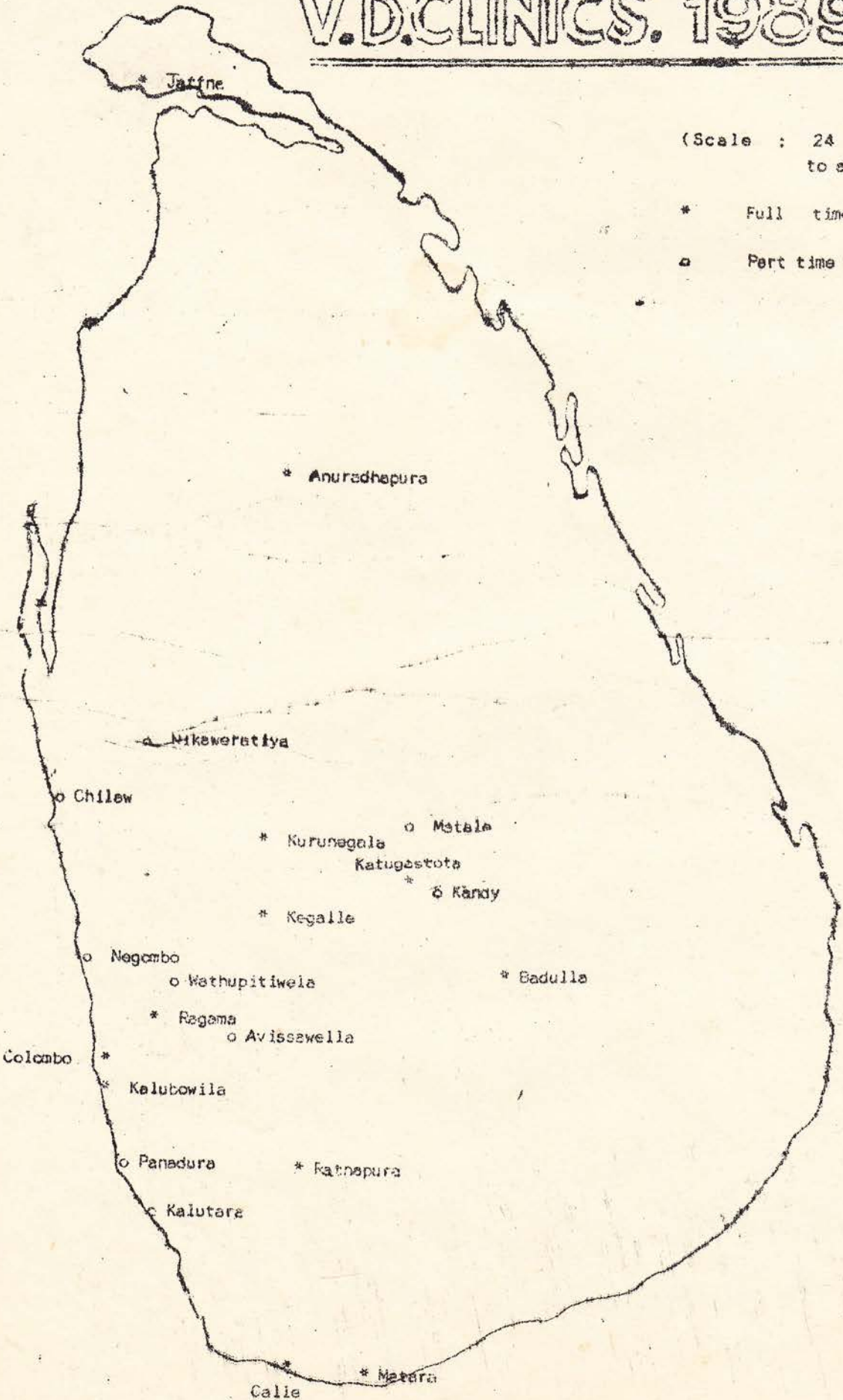
Office of the Director
STD/AIDS Control Programme
P.O. Box 567
De Saram Place
Colombo 10.
SRI LANKA.

FULL TIME & PART TIME V.D. CLINICS. 1989

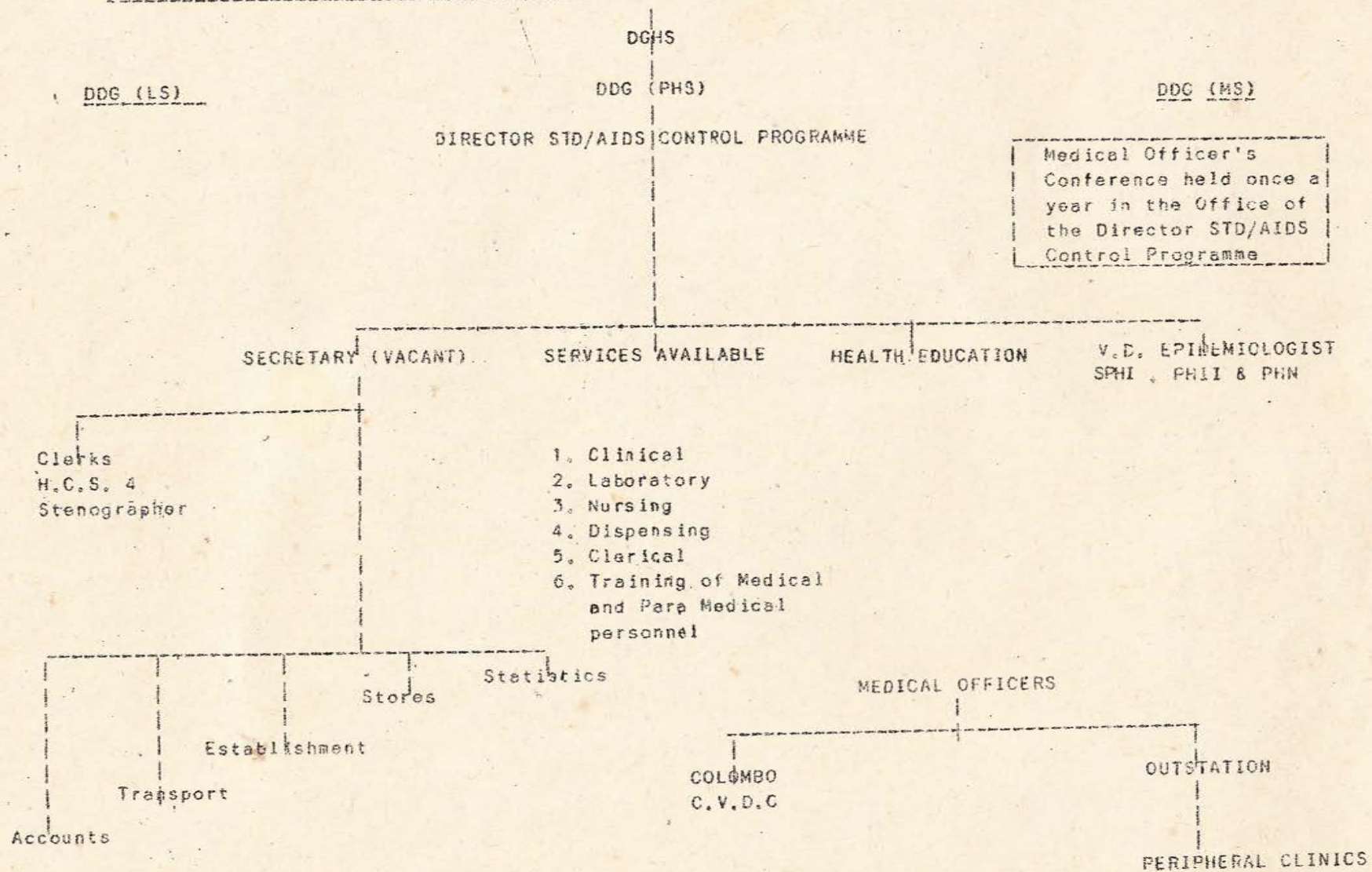
(Scale : 24 miles
to an inch)

* Full time V.D.

o Part time V.D. Cl



ORGANISATION CHART - STD/AIDS CONTROL PROGRAMME



CONTENTS

	<u>PAGE</u>
1. <u>INTRODUCTION</u> :	1
2. <u>PROBLEM</u> :	1
(a) Morbidity :	1 - 2
(b) Social Aspects :	2 - 3
3. <u>ORGANIZATION</u> :	3 - 4 - 5
4. <u>CO-ORDINATION</u> :	
(a) Local Authorities :	5
(b) Voluntary Organizations :	6
5. <u>ACTIVITIES</u>	
(a) Preventive :	6
(b) Curative :	7
6. <u>EDUCATIONAL</u> :	7
7. <u>LABORATORY WORK</u> :	7 - 8
8. <u>ACHIEVEMENTS</u> :	8 - 9
9. <u>SOCIAL STUDIES, RESEARCH & SURVEYS</u> :	9
10. <u>INTERNATIONAL ASSISTANCE</u> :	9
11. <u>FUNDINGS</u> :	9 - 10
12. <u>CONCLUSION</u> :	11
13. <u>ACKNOWLEDGEMENTS</u> :	11

ADMINISTRATION REPORT OF
STD/AIDS CONTROL PROGRAMME - 1989

1. INTRODUCTION

The sexually transmitted diseases are a group of diseases which are transmitted by 'Sexual Intercourse'. They are not respectors of persons or of social classes. They are infectious and each disease is caused by a germ or causative organism. These forms usually enter the body as a result of sexual intercourse with an infected person. Majority of the venereal diseases can be cured if they are diagnosed early and if right treatment is given.

2. PROBLEM

(a) Morbidity

591 new cases of 'Early Infectious Syphilis' and 2099 new cases of 'Gonorrhoea' were registered in the island's full-time clinics as compared with 515 and 2328 respectively in the previous year.

However, it is important to note that these figures show the trend of the clinics but not a true picture of the incidence of STD in 'Sri Lanka', as it is estimated that only around 15-20% of those infected attend clinics. Others seek treatment from private medical practitioners and quacks.

The rate per 100,000 population for 'Early Infectious Syphilis' was 3.5 as compared with 3.1 in the previous year.

The rate per 100,000 population for 'Gonorrhoea' was 12.4 as compared with 14.0 in the previous year.

The Colombo clinic recorded a slight increase in 'Early Infectious Syphilis' but a decline in 'Gonorrhoea'.

There were 308 new cases of 'Early Infectious Syphilis' and 1084 new cases of 'Gonorrhoea' as compared with 253 and 1116 respectively in the preceding year.

The 20 - 29 age group accounted for 59.8% of all cases of 'Early Infectious Syphilis' and 65.0% of all cases of 'Gonorrhoea' as compared with 60.0% and 62.0% respectively in the previous year. (Table III Colombo C.V.D.C. Male Section).

The 10 - 19 age group accounted for 5.8% of the total cases of 'Early Infectious Syphilis' as compared with 12.0% in the previous year. 'Gonorrhoea' cases in this age group accounted for 6.5% of the total cases of 'Gonorrhoea' as compared with 7.8% in the previous year.

Contact investigation and Health Education activities contributed to the attendance of 100% of the 'Early Infectious Syphilis' and 81.7% of the cases of 'Gonorrhoea' at the Colombo clinics as compared with 45.5% and 47.4% respectively in the previous year.

At the out-station clinics 283 new cases of 'Early Infectious Syphilis' and 1015 new cases of 'Gonorrhoea' were treated as compared with 262 and 1212 in the previous year - an increase of 8.0% in 'Infectious Syphilis' and 16.2% decrease in 'Gonorrhoea'.

There were 02 cases of 'Early Congenital Syphilis' cases and 10 'Late Congenital Syphilis' cases as compared with 09 and 17 respectively in the previous year.

In Colombo there were 611 new cases of 'Non Gonococcal Urethritis' cases, while in out-stations it was 476.

Less cases of 'Herpes Genitalis' were seen at the Colombo clinic than in the out-station clinics. In Colombo 314 new cases were registered for the year 1989 while at the out-station clinics it was 366.

04 new cases of 'Ophthalmia Neonatorum' were registered in Colombo Clinic, but at the out-station clinics 23 new cases were registered in 1989.

125 new cases of 'Candidiasis' and 234 new cases of 'Genital Warts' were diagnosed at the Colombo Clinic, as compared to 137 and 111 respectively in the out-station clinics.

312 cases of 'E. lactanosa' were diagnosed and treated at the Colombo V.D. Clinic.

Firstly introduction of 'Private Practice' and secondly, as some out-station full-time V.D. clinics continued to function without the services of full-time medical officers, thirdly due to the insurgence problem led to a drop in attendance.

Health Education plays a very important part in the control of STD. It is necessarily a long and tedious process which will gain ground little by little. But it is the only effective method available to get V.D. patients to clinics for proper and correct treatment.

(b) Social Aspects

The highest attendance in the Colombo clinics recorded this year are traders and labourers. The traders accounted for 18.1% of all cases of 'Early Infectious Syphilis' and 21.2% of all cases of 'Gonorrhoea' as compared with 45.0% and 35.8% respectively in the previous year. (Colombo Clinic Male Section)

Labourers accounted for 20.8% of all cases of "Early Infectious Syphilis" and 19.6% of all cases of "Gonorrhoea" as compared 44.0% and 32.5% respectively in the previous year. (Colombo Clinic Male Section)

Prostitutes and Casual Acquaintances together accounted for 52.9% of the sources of infection of cases of "Early Infectious Syphilis" and 68.4% of all cases of "Gonorrhoea" as compared with 39.0% and 53.0% respectively in the previous year. (Colombo Clinic, Male Section).

Sources of infection of "Homo sexual" origin were 12.4% for "Early Infectious Syphilis" and 4.1% for "Gonorrhoea" as compared with 10.5% and 3.8% respectively in the previous year. It is felt however, that these figures are not a true indication of infection of "homo sexual" origin, as many patients who were homo sexually inclined are reluctant to admit the fact. (Colombo Clinic Male Section)

3. ORGANIZATION

The "Sexually Transmitted Diseases" Control Programme in Sri Lanka is at present not well organized. The country is covered with a network of 12 full time clinics. But very often these clinics do not function properly due to shortage of full time medical officers to man these clinics.

"Health Care Delivery Programme" of the S.T.D. include detection of cases and treatment, Contact investigations, Contact tracing, Tracing of Defaulters and all V.D.R.L REactives, Ante-Natal blood testings, Blood survey of high risk groups. Health Education and providing laboratory facilities for the investigation of cases of sexually transmitted diseases.

Change of Staff

1. Dr. (Mrs.) L.M. Weerakkody MO, CVDC went on No-pay leave for 2 years from 15.05.89.
2. Dr. (Mrs) R.P. Gunawardena MO, CVDC went on transfer to Castle Street Maternity Hospital, Borella on 25.03.89.
3. Dr. H.M. Wijesooriya transferred from VDC Badulla to RHHS division Kurunegala from 13.03.89.
4. Dr. (Mrs) V.De S. Ginige assumed duties on 18.09.89 as MO, VDC Galie
5. Dr. (Mrs) R.C. Meegama assumed duties on 20.10.89 as MO, VDC Katugastota.
6. Mr. W.H.G. Fernando, PHI/HE CVDC retired from government service on 26.02.89.
7. Mr. J.M.D.A.K. Jayamanne assumed duties as PHI at CVDC Colombo on 01.08.89.
8. Mrs. N.P. Ratnayake, Staff Nurse, CVDC went on No pay leave for 02 years with effect from 08.02.89.
9. Mrs. P.M.G. Keerthilatha, Staff Nurse CVDC Colombo retired from government service with effect from 01.02.89.
10. Mrs. B.J. Nonis, Staff Nurse CVDC Colombo retired from government service with effect from 01.02.89.
11. Mr. K.A.N. Senaratne assumed duties as PHI, CVDC Colombo on 01.08.89.
12. Mr. P.K.L. Pushpakumara assumed duties as PHI, VDC Badulla on 01.08.89.
13. **Ms.** S.S. Ediriweera, Microscopist CVDC Colombo was transferred to Anti-Malaria Campaign with effect from 30.10.89.
14. Mr. P.D. Gamini, Mocoscopist came on transfer from Anti-Malaria Campaign to CVDC Colombo on 16.11.89.
15. Mrs. H.L. Siriwardena, PHN CVDC Colombo retired from government service with effect from 04.06.89.
16. Mrs. K. Herath, PHN CVDC Colombo retired from government service with effect from 30.06.89.
17. Mrs. P.S. Tissera, Female Attendant VDC Kalubowilla retired from government service with effect from 15.03.89.
18. Mr. Y.G. Simon, Male Attendant VDC Katugastota retired from government service with effect from 21.04.89.

19. Mr. M.D. Nobert, Ordinary Labourer, VDC Ragana retired from government service with effect from 05.04.89.
20. Miss D.M. Karunawathie Female Labourer, CVDC Colombo was transferred to General Hospital Badulla with effect from 31.07.89.
21. Mr. A.A. Sarathweera Silva, Sanitary Labourer VDC Matara was transferred to Leprosy Hospital, Hendala with effect from 15.06.89.
22. Mr. K.A. Jude Saman Lal, Sanitary Labourer, CVDC Colombo transferred to District Hospital Kandana.
23. Mr. S.G. Gamage, Clerk, CVDC Colombo was transferred to Southern Provincial Council with effect from 26.12.89.
24. Miss K.I.D. Kumaranayake assumed duties as Staff Nurse, CVDC Colombo on 02.03.89.
25. Miss A.A.R. Chandrani assumed duties as Staff Nurse, CVDC Colombo on 02.03.89.
26. Miss E.M.J. Perera, assumed duties as Staff Nurse, CVDC Colombo on 02.03.89.
27. Miss W.A.D. Jeerasinghe assumed duties as MLT, CVDC Colombo on 27.03.89.
28. Mr. I.D.J. Kumarasiri assumed duties as MLT CVDC Colombo on 15.06.89.
29. Dr. (Mrs) S. Emmanuel MO, VDC Jaffna resigned from government service on 15.09.89.,
30. Dr. (Miss) Thiravian assumed duties as MO, VDC Jaffna on 20.10.89.

CO-ORDINATION

(a) Local Authorities

Routine blood testings of expectant mothers was continued at the ante-natal clinics in the Colombo and Kandy municipalities with the co-operation of the municipal authorities.

All cases reactive in the Venereal Diseases Research Laboratory Test (V.D.R.L) were investigated and treated where necessary at the Colombo and Katugastota Clinics (Tables IX & X)

This activity is further intensified with the V.D. Control Programme working in close collaboration with the 'Family Health Programme'.

(b) Voluntary Organisations

Regular "Health Educational Programmes" were carried out with the co-operation of voluntary organizations.

Programmes of health education in "Sexually Transmitted Diseases" were carried out in Teacher Training Colleges, Universities, in Estates, Schools, Hotels and other Training institutions.

The Campaign participated in "Mahapola" and "Gan Udawa" exhibitions and in other exhibitions organised by various organizations and schools.

5. ACTIVITIES

Regular control measures were carried out at all full time clinics. An analysis of cases is given in Tables II & XI.

(a) Preventive

Contact investigation was carried out in respect of all cases of infectious V.D. (Tables VII, VII B and IV).

Routine blood testings of all admissions to "Remand Homes", "Prisons" and the "Training Schools for Youthful Offenders" were continued.

Blood surveys were carried out in Hotels, Prisons, Rehabilitation Camps, & in Estates. Cluster surveys were carried out among 'Slum Dwellers'. Also blood testings of "Police Personnel" and Armed Service Personnel" were carried out before recruiting and while in service.

Many a hidden sources of infection in the community has been brought into the open for treatment and follow up, as a result of magistrates referring cases for examinations and treatment to V.D. clinics.

Routine blood tests were continued at Ante-natal clinics and "Maternity Wards" of hospitals in Colombo and in out-stations (Tables IX & X).

(b) Curative

The 'standard treatment' for "Gonorrhoea" was "Procaine Penicillin" 4.8 mega units for both males and females, preceded by the administration of 1G "Probencid" orally.

All "Syphilis" cases were treated with "Benzathine Penicillin" 2.4 mega units for (S1,S2,S3) early infectious syphilis. 2.4 x 3 mega units for "Early latent syphilis" cases, and 2.4 x 4 mega units for "Late latent Syphilis" Cases.

All pregnant mothers with Syphilis were treated with "Procaine Penicillin" 800,000 units (IM) x 12 to 21 depending on the stage of infection.

B'lactomase positive cases were treated with an alternative drug 800 mg stat dose of "Noroxin".

6. Educational

The training of medical and para-medical personnel in V.D. control was continued at the Central V.D. Clinic and at Katugastota V.D. Clinic.

Lecture demonstrations to various categories of health personnel in-service and in-training were continued.

Post-graduates and under-graduates of the Faculty of Medicine at Peradeniya, and Galle were given Lecture Demonstrations on V.D. and its control.

7. Laboratory Work

The laboratory services required for the activities of the Anti S.T.D. Campaign are provided by the Central Laboratory, in charge of a Bacteriologist. This serves as a routine and reference laboratory for the Colombo clinic, and as a reference laboratory for all V.D. Clinics in the island, and also entertain reference work from any other hospital or general practitioners all over the island. In Katugastota, the laboratory work is under the control of the Venereologist.

The activities as far as the diagnosis of "Venereal Disease" concerned are supervised and controlled by the Central laboratory which provides, control 'Sero-reagents' for serological and bacteriological work, and evaluates the performance of the test. IN all provincial laboratories the VDRL test is performed as a routine. Equipments and reagents necessary are indented for and distributed by the Central Laboratory.

The TPHA, FTA-Abs, FTA-IgM and the Lange gold curve tests are being satisfactorily carried out at the Central Laboratory. Gonococcal culture, isolation and identification is also performed in the Central Laboratory.

In addition to the ELISA test, the passive particle agglutination (Serodia) and the HIV-Chek were introduced for the detection of HIV antibodies in the Central Laboratory.

ELISA facilities for HIV antibody detection were established in the General Hospital, Jaffna and the Medical Faculty, Galle.

Possibility of establishing the Immunofluorescence test for Chlamydia have been explored and a few selected samples have been processed.

8. Achievements

Sero surveys for 'AIDS' were carried out on STF personnel (Police Force) at Gonahena Operation Headquarters, ward Place, Colombo, Training Camp, Katukurunda, Torrington Square and Rajagiriya.

78 Detainees of Army Rehabilitation Centre, Telawala, Ratmalana were also screened for HIV.

Blood srveys for syphilis have been carried out in Hotels and Estates.

Training of Medical, Para-medical personnel is being carried out.

Intensive 'Health Education' activities have been carried out to educate the susceptible groups, the school students, and the general public, by way of talks, lecture demonstrations, exhibitions, film-shows, Radio & TV Programmes to get their co-operation in controlling V.D.

47858 persons were tested for HIV during the year 1989 and 11 were found to be HIV antibody positive.

The islands ante-natal sero activity rate is 0.43% as compared with 0.52% of the previous year.

Screening of all Central Blood Bank donor samples for HIV has been established.

9. Special Studies, Research & Surveys

The first positive case of HIV II infection was detected in the latter part of the year.

10. International Assistance

Equipment - Safety Cabinet - donated by
 ELISA reader -
 ELISA Plate washer

Two medical laboratory technologists participated in the Inter country Workshop on HIV testing in Bangkok which was organised by the WHO. With the active co-operation of the Department of Microbiology of the Mahidol University in Bangkok this first HIV II case was detected in the latter part of the year.

11. Fundings

01. <u>Personnel Emoluments</u>	<u>Rs.</u>	<u>Estimates</u> <u>1989</u>
1. Salaries and Wages	2,000,000	
2. Overtime and Holiday Pay	20,000	
4. Uniform Allowance	8,330	
8. Cost of Living Allowance	-	
9. Other Allowance	166,650	
		<u>2,194,980</u>

02. Travelling Expenses

- 1. Travelling Expenses
 - Local 83,330
- 2. Change of Station -
Travelling Expenses - Local 3,330

86,660

03. Supplies & Requisites

- 1. Stationery and Office Equipments 6,650
- 2. Fuel and Lubricants 33,330
- 5. Medical Supplies 3,66,650
- i Drugs -
- ii Other -
- iii Customs Duty -
- iv Turn Over Tax -
- 7. Uniforms (including tailoring charges)
- 9. Other items of Stores -

4,06,630

04. Repairs and Maintenance of Capital Assets

- 1. Repair & Maintenance of Vehicles, machinery and equipments 30,000

30,000

05. Transportation, Communication, Utility & Other Services

- 1. Transportation 3,43,300
- 2. Communication
- 3. Utility
 - (i) Electricity 4,000
- 5. Rates and Taxes
- 9. Other Services 650

3,43,300

4,650

Attendance by Years - Central V.D. Clinic, Colombo

V.D. Cases 1989

Year	MALES			FEMALES		
	First Visit	Subsequent Visits	Total Visits	First Visit	Subsequent Visits	Total Visits
1982	5267	11727	16994	1519	3953	5472
1983	3847	8175	12022	1183	3280	4463
1984	4520	7495	12015	1216	3079	4295
1985	4232	10134	14366	1483	3958	5441
1986	4121	11579	15700	1503	3796	5299
1987	3354	8548	11902	1525	3159	4684
1988	3669	10645	14314	1464	3713	5177
1989	3586	10101	13687	1404	4287	5691

TABLE II

Analysis of New Cases - 1989

	C.V.D.C.		Total
	Males	Females	
<u>Syphilis:</u>			
S1-Sero Negative Primary	26	03	29
S1-Sero Positive Primary	193	25	218
S3-Secondary	40	21	61
S4-Latent Early	67	69	136
Latent Late	97	92	189
S5-Neuro Syphilis	-	-	-
S6-Cardiovascular	02	-	02
S7-Other Late Syphilis	-	-	-
S8-Congenital Early (under 02 years)	-	01	01
" Late (Over 02 years)	01	04	05
Gonorrhoea	872	212	1084
Presumptive Gonorrhoea	05	15	20
Non Gonococcal Urethritis	509	302	811
Chancroid	53	05	58
Lympho Granuloma Venereum	-	-	-
Reiters Diseases	-	-	-
Trichomoniasis	01	140	141
Granuloma Inguinale	-	-	-
Other Venereal	226	21	247
Herpes Genitalis	260	64	324
Genital Warts	191	43	234
Candidiasis	55	70	125
Ophthalmia Neonatorum	03	01	04
Yaws Early	-	-	-
Yaws Late	-	-	-
Non Venereal	985	316	1301

12. Conclusion

V.D. control activities were maintained satisfactorily during the year 1989.

The attendance of new cases of "Early infectious syphilis" shows a slight increase - 14.8% more than the previous year in the whole island.

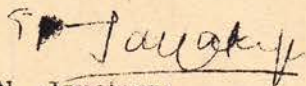
But 'Gonorrhoea' shows a decline - 9.8% less than the previous year.

Colombo clinic shows an increase in infectious syphilis 21.7% more than the previous year. Gonorrhoea 2.9% less than the previous year.

The incidence of STD is so widespread today, that the few investigating officers of the campaign alone cannot cope up with the problem effectively. It requires efforts over a wider front involving other public health personnel in the field. They should play a more active role in tracing contacts and referring them to the nearest V.D. Clinic for examination and treatment. Every delay in tracing a contact can result in ~~several~~ "fresh chain" of infection.

13. Acknowledgements

The Director, Anti STD Campaign wishes to place on record his deep appreciation of the encouragement and assistance he has received from the "Department of Health Services" as well as from outside towards the STD Control work.



Dr. G.N. Jayakuru

Director

STD/AIDS CONTROL PROGRAMME

TABLE NO. IV

Distribution of Cases by Occupation - 1989
Colombo Central V.D. Clinic - Male Section

	SYPHILIS				
	S1, S2, S3	S4 Early	Late Syph:	Cong. Syph:	Gonorrhoea
Bus Conductors	01	-	-	-	14
Barbers	-	-	-	-	-
Blacksmiths	-	-	-	-	-
Carpenters	02	01	-	-	07
Clerks	06	02	03	-	15
Cobblers	-	-	-	-	-
Cultivators	04	01	02	-	03
Domestics	01	-	-	-	05
Drivers	10	03	02	-	48
Firemen	-	-	-	-	-
Fish Vendors	02	01	-	-	05
Food Handlers	01	-	-	-	02
Goldsmiths	-	-	-	-	-
Labourers	54	10	27	01	171
Laundrymen	-	-	-	-	-
Laywers	-	-	-	-	-
Masons	03	-	-	-	12
Mechanics	22	03	07	-	67
Overseers	01	-	-	-	03
Painters	04	01	-	-	03
Peons	03	-	-	-	07
Planters	-	-	-	-	-
Police & Prison Officials	03	-	-	-	02
Priests	-	-	-	-	-
Salesmen	-	-	-	-	-
Seamen	03	02	-	-	05
Security	02	01	-	-	11
Sailors	01	-	01	-	06
Soldiers	07	02	-	-	12
Students	02	-	-	-	05
Tailors	01	-	-	-	03
Teachers	01	01	-	-	02
Traders	47	10	03	-	185
Unemployed	23	07	10	-	98

TABLE V

CENTRAL LABORATORY TECHNICAL REPORT

COLOMBO CENTRAL V.D. CLINIC - 1989

	Males	Females	Total
<u>S.I.S - V.D.R.L</u>			
No. of Regular Clinic Cases for 1st Visit	3586	1404	3212
No. of Regular Clinic Cases Reactive	426	215	511
No. of Regular Clinic Cases Non Reactive	3160	1189	2695
Total No. of Regular Clinic Cases for VDRL	5485	1799	7284
Total No. of Regular Clinic Cases Reactive	949	726	1675
Total No. of Regular Clinic Cases Non Reactive	4536	1173	5709
Total No. of C.S.F Samples	-	-	20
No. of C.S.F. Positives for Syphilis	-	-	04
No. of Smears for G.C.	2731	1603	4534
No. of Smears found positive for G.C.	868	76	944
No. of Smears for D.G. Examination for T.P	562	91	653
No. of Smears positive for T.P	120	08	128
No. of Smears for T.V.	404	1777	2181
No. of Smears positive for T.V.	05	210	215
No. of Cultures for G.C.	2338	1900	4238
No. of Cultures Positive for G.C.	812	272	1084
<u>E.lactosae</u>	-	-	1162
No. Positive	-	-	312
H.S.V. giant-cells No. tested	487	139	626
No. Positive	145	35	180
<u>Urine</u>			
Albumin	400	32	432
Sugar	400	32	432
Deposits	400	32	432

TABLE V (Contd.)

	Total
<u>S.H.S. Colombo</u>	
Total No. of Cases for VDRL	21996
Total No. of Cases Reactive	479
No. of Ante-natal Cases from MOH Divisions	-
No. of Ante-natal cases Reactive	-
No. of Blood Donors for VDRL	9080
No. of Blood Donors Reactive	154

TABLE V (Contd.)

	Total
<u>Other S.P.S's</u>	
Total No. of Cases for VDRL	2952
Total No. of Cases Reactive	61
No. of Ante-natal Cases from MCH Divisions	-
No. of Ante-natal Cases Reactive	-
No. of Blood Donors for VDRL	1856
No. of Blood Donors Reactive	34
<u>Out-station Clinics</u>	
Total No. of Cases for Reference Tests	1065
Total No. of Cases Reactive	406
<u>A.I.D.S. Survey</u>	
Total No. of H.I.V Antibody Tests Done	47858
Total No. H.I.V Reactive	11

TABLE VI

Treatment Completed at the Colombo Central V.D. Clinic

	1985		1986		1987		1988		1989	
	M	F	M	F	M	F	M	F	M	F
Syphilis	451	117	381	88	344	114	390	155	381	165
Gonorrhoea	980	141	1004	121	793	194	894	236	872	212
Presumptive Gonorrhoea	-	60	01	31	07	29	07	30	05	15

M = Males

F = Females

TABLE VII B

Investigation of Family Contacts
Central V.D. Clinic Colombo - 1989

Contact Slips Issued :

<u>Syphilis Early</u>	S1	03
	S2	17
	S3	08
	S4 Early	25
<u>Syphilis Late</u>	S4 Late, S5, S6, S7	38
	Gonorrhoea	69

Family Contacts - Brought to Clinic

S1, S2, S3	12
S4 Early	22
Syphilis Late	23
Gonorrhoea	40

Family Contacts - Found Positive

S1, S2, S3	11
S4 Early	11
Syphilis Late	05
Congenital Syphilis - Early	01
Congenital Syphilis - Late	02
Gonorrhoea	20

Family Contacts - Treated for

Syphilis Early	08
Syphilis Late	05
Congenital Syphilis	03
Gonorrhoea	20
Presumptive Gonorrhoea	16

TABLE VII C

Sources of Infection "Infectious Syphilis", "Gonorrhoea"
Colombo Central V.D. Clinic (Male Section) 1989

	S1, S2, S3	%	Gonorrhoea	%
Prostitutes & Casual Acquaintances	137	52.9	596	68.4
Home Sexuals	32	12.4	36	4.1
Marital Partners	02	0.7	06	0.7
Mistresses	06	2.3	11	1.3
Friends	-	-	-	-
Denies Exposures	07	2.7	25	2.8
Not Interviewed	75	29.0	198	22.7
Total	259	100.0	872	100.0

TABLE VIII

Analysis of New Cases by reasons for Attendance

Central V.D. Clinic Colombo - 1989

	S1,S2,S3		S4 Early		Late Syphilis		Congenital Syphilis		Gonorrhoea		Presumptive Gonorrhoea		N.G.U		Chancroid	
	M	F	M	F	M	F	M	F	M	F	M	F	M	F	M	F
Contact Investigation	06	05	11	03	09	01	-	03	05	32	02	09	03	32	-	-
Voluntary	152	11	18	08	12	13	-	-	580	39	01	02	295	87	37	02
Special Surveys	-	-	-	-	01	01	-	-	-	-	-	-	-	-	-	-
Transferred from other Clinics	-	-	-	-	-	-	-	-	-	-	-	-	-	-	-	-
Referred from other Depts & Physicians	65	12	07	14	19	24	-	02	122	11	01	02	60	27	13	02
Pre-employment	-	-	11	01	22	03	01	-	-	-	-	-	-	01	-	-
Court Referrals	01	04	-	22	-	14	-	-	02	21	-	-	02	35	-	-
Health Education	-	-	-	-	-	-	-	-	01	-	-	-	-	-	-	-
Follow-up Work	35	17	20	21	36	36	-	-	162	109	01	02	140	120	03	01
Introduced by other patients	-	-	-	-	-	-	-	-	-	-	-	-	-	-	-	-
Epi-Treatment	-	-	-	-	-	-	-	-	-	-	-	-	-	-	-	-
Total	259	49	67	69	99	92	01	05	872	212	05	15	5	302	53	05

TABLE VIII (Cond.)

	L.G.V		Trichomonas Vaginalis		Other Venereal		Herpes Genitalis		Candidiasis		Genital Warts		Ophthalmia Neonotorum		Yaws		Non Venereal		Total	
	M	F	M	F	M	F	M	F	M	F	M	F	M	F	M	F	M	F	M	F
Contact Investigation	-	-	-	11	01	02	04	05	01	07	-	-	-	01	-	-	41	45	83	156
Voluntary	-	-	01	17	164	03	178	19	39	24	103	17	-	-	-	-	655	93	2235	335
Special Surveys	-	-	-	-	-	-	-	-	-	-	-	-	-	-	-	-	01	-	02	01
Transferred from Other Clinics	-	-	-	-	01	-	01	-	-	-	01	-	-	-	-	-	03	-	06	-
Referred from other Depts & Physicians	-	-	-	13	36	08	39	30	09	10	59	13	03	-	-	-	203	90	636	258
Pre-employment	-	-	-	-	01	-	-	-	-	-	-	-	-	-	-	-	08	-	43	05
Court Referrals	-	-	-	39	-	01	01	03	-	06	-	03	-	-	-	-	22	75	28	223
Health Education	-	-	-	-	-	-	-	-	-	-	-	-	-	-	-	-	02	-	03	-
Follow-up work	-	-	-	60	23	07	37	07	06	23	28	10	-	-	-	-	45	13	545	426
Introduced by other Patients	-	-	-	-	-	-	-	-	-	-	-	-	-	-	-	-	05	-	05	-
Epi-Treatment	-	-	-	-	-	-	-	-	-	-	-	-	-	-	-	-	-	-	-	-
Total	-	-	01	140	226	21	260	64	55	70	191	43	03	01	-	-	985	316	3586	1404

TABLE X

Analysis of Serological Tests for Syphilis (New Cases)

Outstation V.D. Clinics - 1989

	NO. OF SPECIMENS				% Reactive
	Total	No. Reactive	No. Non Reactive	Others	
Regular Clinic Cases	4465	457	4008	-	10.2
Pre-Natal	14068	83	13985	-	0.6
Pre-employment	26433	85	26348	-	0.3
Admission to Eye clinics	39	02	37	-	5.1
Referred Cases	2583	61	2522	-	2.3
Rat-bite cases	-	-	-	-	-
Blood Banks	2222	09	2213	-	0.4
Estates	-	-	-	-	-
Service Personnel	10296	25	10271	-	0.2
Other Surveys	10850	81	10769	-	0.7
Total	70956	803	70153	-	1.1

TABLE IX

Analysis of Serological Tests (Nes Cases)
Central V.D. Clinic - Colombo - 1989

	NO. OF SPECIMENS				% Reactive
	Total	No. Reactive	No. Non Reactive	Others	
Regular Clinic Cases	4990	641	4349	-	12.8
De-Soysa Maternity Hospital Colombo	6386	95	6291	-	1.5*
Castle Street Maternity Hospital Colombo	7333	132	7201	-	1.8**
Colombo Central Maternity Hospital	-	-	-	-	-
Municipal Clinics	2790	48	2742	-	1.7***
Pre-employment	11001	53	10948	-	0.5
Referred from other clinics	1358	30	1328	-	2.2
Rat-bite cases	10	-	10	-	-
Vagrants	-	-	-	-	-
Estates	-	-	-	-	-
Service Personnel - (Police)	1119	01	1118	-	0.08
Elcod Bank	26380	456	25924	-	1.7
Special Surveys	1373	01	1372	-	0.07
Total	62740	1457	61283	-	2.3

* Corrected rate after excluding 80 false positives and previously treated cases : 0.2

** Corrected rate after excluding 110 false positives and previously treated cases : 0.3

*** Corrected rate after excluding 11 false positives and previously treated cases : 0.3

TABLE XI (Contd.)

Analysis of New Cases - 1989
Out-station Full time V.D. Clinics

	KEGALLE		KURUNEGALA		MATARA		RAGAMA		RATNAPURA		TOTAL	
	M	F	M	F	M	F	M	F	M	F	M	F
Sero Negative Primary Syphilis	-	-	-	-	-	-	05	01	02	-	26	10
Sero Positive Primary Syphilis	06	03	08	05	12	03	17	05	12	02	155	48
Secondary Syphilis	-	-	02	03	01	-	06	09	01	-	21	23
Latent Early Syphilis	04	02	07	04	05	03	02	01	-	-	43	54
Latent Late Syphilis	01	-	04	07	02	-	-	-	03	04	39	31
Neurosyphilis	-	-	-	-	-	-	-	-	-	-	01	-
Cardiovascular Syphilis	-	-	-	-	-	-	-	-	-	-	-	-
Other late syphilis	-	-	-	-	-	-	-	-	-	-	-	-
Congenital Syph. (under 02 years)	-	-	-	-	01	-	-	-	-	-	01	-
Congenital Syph. (over 02 years)	-	-	-	-	-	01	-	-	-	-	01	04
Gonorrhoea	28	12	92	05	91	27	75	21	65	77	792	223
Presumptive Gonorrhoea	02	02	-	11	-	07	05	03	03	03	10	60
Non Gonococcal Urethritis/Cervicitis	07	01	06	12	22	06	01	-	19	05	343	133
Chancroid	05	04	21	08	04	-	16	08	17	02	144	33
Lympho Granuloma Venereum	-	-	-	-	-	-	-	-	02	-	02	-
Trichomonas Vaginalis	-	17	-	29	-	-	-	09	-	18	31	137
Reiters Disease	-	-	-	-	-	-	-	-	-	-	-	-
Other Venereal	15	01	17	09	26	06	08	05	06	01	162	87
Herpes Genitalis	11	06	35	24	47	05	04	-	18	-	267	99
Granuloma Inguinale	-	-	-	-	-	-	-	-	-	-	-	-
Candidiasis	03	61	-	-	01	04	-	03	-	10	20	117
Ophthalmia Neonatorum	01	-	04	01	06	03	01	-	-	-	16	07
Genital warts	-	-	-	-	04	01	-	-	10	04	94	17
Yaws Early	-	-	-	-	-	-	-	-	-	-	-	-
Yaws late	-	-	-	-	-	-	-	-	-	-	-	-
Non Venereal	34	81	12	41	54	26	37	17	26	07	853	391
Total	117	190	208	159	278	92	177	82	184	133	2991	1474

TABLE NO. XI

Analysis of New Cases - 1989
Out-station full-time V.D. Clinics

	Anuradhapura		Badulla		Galle		Jaffna		Kalubowila		katugastota	
	M	F	M	F	M	F	M	F	M	F	M	F
Sero Negative Primary Syphilis			07	08	01	-	02	-	-	01	09	-
Sero Positive Primary	N		11	07	18	06	07	01	10	04	54	12
Secondary	O		-	-	-	01	01	-	05	02	05	08
Latent Early			-	-	06	20	01	02	01	02	17	20
Latent Late	T		-	-	05	05	08	07	04	02	12	06
Neurosyphilis			-	-	-	-	-	-	-	-	01	-
Cardiovascular			-	-	-	-	-	-	-	-	-	-
Other late syphilis			-	-	-	-	-	-	-	-	-	-
Congenital Syph. (under 02 years)	A		-	-	-	-	-	-	-	-	-	-
Congenital Syph. (Over 02 years)	V		-	-	-	01	-	-	-	-	01	02
Gonorrhoea	A		56	06	76	20	19	03	49	03	241	49
Presumptive Gonorrhoea			-	-	-	01	-	06	-	01	-	26
Non Gonococcal Urethritis, Cervicitis	I		32	04	48	03	03	-	33	02	172	100
Chancroid	L		-	-	29	09	08	01	06	01	08	-
Lympho Granuloma Venereum			-	-	-	-	-	-	-	-	-	-
Trichomonas Vaginalis	A		27	03	-	-	-	-	-	07	04	54
Reiters Disease	E		-	-	-	-	-	-	-	-	-	-
Other Venereal			-	-	54	57	20	07	15	01	01	-
Herpes Genitalis	L		07	02	-	-	04	03	26	14	115	45
Granuloma Inguinale	E		-	-	-	-	-	-	-	-	-	-
Candidiasis			13	04	-	-	-	-	-	01	03	34
Ophthalmia Neonatorum			-	-	-	-	-	-	-	-	02	03
Genital Warts			14	-	-	-	-	-	11	05	55	07
Yaws Early			-	-	-	-	-	-	-	-	-	-
Yaws Late			-	-	-	-	-	-	-	-	-	-
Non Venereal			-	-	65	47	67	26	52	23	506	123
Total			167	34	302	170	140	56	212	69	1206	9

TABLE NO. XII
Diagnostic Examination - 1989
Outstation Full-time V.D. Clinics

	Anuradhapura		Total	Badulla		Total	Galle		Total	Jaffna		Total	Kalubowila		Total	Katugastota		Total
	M	F		M	F		M	F		M	F		M	F		M	F	
Smears for Gonococci				37	22	59	306	155	461	29	13	42	108	159	267	610	445	1055
Culture for Gonococci				-	-	-	-	-	-	-	01	01	-	-	-	61	317	378
Darkground for T.P	N O T			11	01	12	35	04	39	01	01	02	33	06	39	144	18	162
Smears for T.V.				07	29	36	11	123	134	16	12	28	-	171	171	456	433	889
Blood samples for syphilis	AVAILABLE			547	427	974	2845	3857	6702	1621	1899	3520	346	293	639	12157	7162	19319
Spinal fluid for syphilis				-	-	-	-	-	-	-	-	-	-	-	-	70	23	93
T.P.H.A. tests				-	-	-	17	27	44	-	-	-	-	-	-	-	-	-
Other tests				-	-	-	-	-	-	-	-	-	-	-	-	-	-	-
Total				602	479	1081	3214	4166	7380	1667	1926	3593	487	629	1116	13498	8398	21896

	Kegalle		Total	Kurunegala		total	Matara		Total	Ragama		Total	Ratnapura		Total
	M	F		M	F		M	F		M	F		M	F	
Smears for Gonococcal	78	238	316	124	160	284	175	64	239	95	27	122	108	118	226
Culture for Gonococcal	-	-	-	-	-	-	-	-	-	-	-	-	-	-	-
Darkground for T.P	-	-	-	83	53	136	10	01	11	51	19	70	12	03	15
Smears for T.V.	-	238	238	-	141	141	-	30	30	-	79	79	14	103	117
Blood samples for syphilis	1848	2343	4191	5586	5556	11142	4015	2364	6379	1080	2157	3237	2249	2415	4664
Spinal fluid for syphilis	-	-	-	-	-	-	-	-	-	-	-	-	-	-	-
T.P.H.A tests	-	-	-	03	04	07	-	-	-	08	04	12	-	-	-
Other tests	-	-	-	-	118	118	-	-	-	-	45	45	-	-	-
Total	1926	2819	4745	5796	6032	11828	4200	2459	6659	1234	2331	3565	2383	2639	5022

TABLE XIII
FOLLOW UP OF CASES

	ANURADHAPURA					BADULLA				GALLE				JAFFNA														
	Syph.		Gonor.		P.B.	Yaws		Syph.		Gonor.		P.G.	Yaws	Syph.		Gonor.		P.G.	Yaws									
	M	F	M	F	F	M	F	M	F	M	F	M	F	M	F	M	F	M	F									
Under treatment at the beginning of the year						-	-	-	-	-	-	-	-	-	-	-	-	-	-									
Starting treatment during the year						18	15	56	06	-	-	-	-	30	33	76	20	-	01	-	-	19	10	19	03	-	06	-
Under treatment at the end of the year						-	-	-	-	-	-	-	-	-	-	-	-	-	-	-	-	-	-	-	-	-	-	-
Completing treatment during the year						18	15	56	06	-	-	-	-	26	31	75	20	-	-	-	-	19	10	19	03	-	06	-
Failing to complete treatment during the year														04	02	01	-	-	-	-	-	-	-	-	-	-	-	-
Transferred to other clinics for completion of treatment																												
Brought back and completed treatment																												

N O T

A V A I L A B L E

TABLE NO. XIV (Contd.)

	Anura- dhapura	Bedulla	Galle	Jeffna	kalu- bowila	Katugas- tota	Kegalle	Kuru- negela	Metara	Regama	Retne- pura	Total
<u>Contact Slips Issued :</u>												
Syph: (S1)			-	-	03	01	-	-	-	03	-	07
Early (S2)			02	02	03	16	03	04	01	08	02	41
(S3)	N		-	-	-	03	-	02	-	01	-	06
Syph: (S4 Early)			04	01	-	09	01	06	05	-	-	26
Late (S4 Late, S5, S6, S7)	O		-	06	-	02	-	09	-	-	01	18
Gonorrhoea			16	07	-	47	18	36	-	16	27	192
	T											
<u>No. of Family Contacts Brought to Clinic</u>												
S1, S2, S3		N	01	02	02	09	02	06	-	12	02	36
S4 Early			03	-	02	03	01	02	02	-	-	13
Syphilis Late			-	07	-	02	-	09	-	-	-	18
Gonorrhoea	A		13	05	-	28	16	34	13	12	26	147
	V											
<u>No. of Family Contacts Found Positive</u>												
S1, S2, S3		I	-	-	01	02	01	02	-	06	-	12
S4 Early			03	-	-	03	01	01	-	-	-	08
Syphilis Late			-	-	-	-	-	02	-	-	-	02
Congenital Syphilis Early	L		-	-	-	-	-	-	-	-	-	-
Congenital Syphilis Late		I	-	-	-	-	-	-	-	-	-	-
Gonorrhoea	A		07	02	-	14	09	02	05	05	14	58
	B											
<u>Analysis of Treatment</u>												
Syphilis Early		L	01	-	01	05	01	03	-	06	-	17
Syphilis Late			-	-	-	-	01	02	-	-	-	03
Cong. Syphilis	E		-	-	-	-	-	-	-	-	-	-
Gonorrhoea			05	02	-	14	09	04	05	05	14	58
Presumptive Gonorrhoea			02	03	-	09	01	06	05	04	04	31

TABLE NO. XIV
CONTACT INTERVIEWS & INVESTIGATIONS - 1989
OUTSTATION FULL TIME V.D. CLINICS

		Anura- dhapura	Badulla	Galle	Jaffna	kalu- bowila	Katugas- tota	Kegalle	Kuru- negala	Matara	Ragama	Retna- pure	Total
<u>No. of Patients Interviewed:</u>													
Syph:	(S1			01	02	01	08	-	-	-	06	01	19
	(S2	N		22	08	11	65	08	13	07	20	12	166
Early	(S3			02	01	07	12	-	05	01	14	01	43
	(S4 Early	O		14	03	03	36	05	11	04	-	-	76
Syph:	(S4 Late, S5, S6, S7			14	15	03	17	02	08	-	-	04	63
Late	Gonorrhoea	T		62	22	50	290	39	87	70	62	110	792
<u>No. of Extra Marital Contacts</u>													
Named	S1, S2, S3			15	01	05	10	07	18	06	29	07	98
	S4 Early			07	-	-	05	06	05	-	-	-	23
	Gonorrhoea			22	05	02	19	40	45	33	35	76	277
Traced	S1, S2, S3			12	01	03	04	07	14	05	19	04	69
	S4 Early			06	-	-	04	03	-	-	-	-	13
	Gonorrhoea	A	N	26	04	-	15	29	39	15	20	61	209
<u>Brought to Clinic</u>													
	S1, S2, S3		I	12	01	03	01	05	14	03	13	04	56
	S4 Early	A		06	-	-	03	02	-	-	-	-	11
	Gonorrhoea	I		22	04	-	07	20	31	03	18	61	166
<u>Found Positive</u>													
	S1, S2, S3		L	03	-	02	-	02	06	01	06	04	24
	S4 Early			06	-	-	-	-	03	-	-	-	09
	Syphilis Late			-	-	01	-	-	-	-	-	-	01
	Gonorrhoea	A		17	01	-	05	09	02	03	16	56	109
<u>Analysis of Treatment</u>													
	Syphilis Early		L	08	-	02	-	02	09	01	06	04	32
	Syphilis Late			-	-	01	-	-	-	-	-	-	01
	Gonorrhoea	E		16	01	-	05	09	02	03	16	56	108
	Presumptive Gonorrhoea			02	03	-	02	-	05	-	-	01	13

TABLE XV (Contd.)

Year	T.V.	Herpes Genitalis	Reiters Disease	L.G.V.	Yaws Early	Yaws Late	Granuloma Inguinale	Ophthalmia Neonotorum	Candidiasis	Genital Warts	Other Venereal	Total
1974	-	-	-	-	-	-	-	-	-	-	1963	16385
1975	-	-	-	-	-	-	-	-	-	-	3421	19548
1976	1649	677	-	-	-	-	-	-	-	-	1453	19285
1977	1408	656	-	-	-	-	-	-	-	-	1081	14728
1978	1164	406	04	01	01	05	-	-	-	-	1321	12728
1979	919	344	04	-	01	04	-	-	-	-	955	9946
1980	786	651	01	03	-	-	-	-	-	-	950	9705
1981	688	677	08	03	-	01	-	-	-	-	834	9430
1982	625	963	03	01	-	-	-	-	-	-	930	9779
1983	597	672	01	02	-	01	12	-	-	-	922	7755
1984	489	1086	01	04	-	02	08	01	-	-	1021	8210
1985	451	1193	-	01	01	01	10	06	309	169	739	9804
1986	459	1068	-	-	01	01	05	17	378	250	719	8886
1987	413	827	-	02	-	02	01	16	328	240	502	7419
1988	329	859	-	03	-	01	-	33	246	313	534	7663
1989	309	690	-	02	-	-	-	27	262	345	496	6910

TABLE XV
ANALYSIS OF NEW CASES - BY YEARS

Year	Primary Syphilis	Secodary Syphilis	Late Syphilis	Congen: Early	Congen: Late	Gonorrhoea	Presumptive Gonorrhoea	N.G.U./ Cervicitis	Chancroid
1974	1248	260	847	03	78	8166	1154	998	1673
1975	2390	610	562	06	35	8559	1283	1006	1674
1976	3420	1266	245	19	58	7358	897	1013	1140
1977	2836	771	651	28	43	5003	599	631	1021
1978	2146	583	995	38	45	3761	394	673	1186
1979	2269	436	1095	36	24	3085	384	590	700
1980	870	317	988	15	15	3425	327	756	601
1981	727	237	767	26	19	3532	346	727	847
1982	629	188	761	08	10	3728	297	805	831
1983	456	160	573	10	20	2880	272	669	488
1984	511	128	490	07	14	2860	203	1030	355
1985	533	144	559	09	09	2574	214	1732	450
1986	397	101	574	10	28	2494	184	1831	369
1987	345	120	458	07	31	2203	146	1506	272
1988	396	119	582	09	17	2328	169	1495	230
1989	486	105	495	02	10	2099	90	1287	205

TABLE XV (Contd.)

Year	T.V.	Herpes Genitalis	Reiters Disease	L.G.V.	Yaws Early	Yaws Late	Granuloma Inguinale	Ophthalmia Neonotorum	Candidiasis	Genital Warts	Other Venereal	Total
1974	-	-	-	-	-	-	-	-	-	-	1963	16385
1975	-	-	-	-	-	-	-	-	-	-	3421	19548
1976	1649	677	-	-	-	-	-	-	-	-	1453	19285
1977	1408	656	-	-	-	-	-	-	-	-	1081	14728
1978	1164	406	04	01	01	05	-	-	-	-	1321	12728
1979	919	344	04	-	01	04	-	-	-	-	955	9946
1980	786	651	01	03	-	-	-	-	-	-	950	9705
1981	688	677	08	03	-	01	-	-	-	-	834	9430
1982	625	963	03	01	-	-	-	-	-	-	930	9779
1983	597	672	01	02	-	01	12	-	-	-	922	7755
1984	489	1086	01	04	-	02	08	01	-	-	1021	8210
1985	451	1193	-	01	01	01	10	06	309	169	739	9804
1986	459	1068	-	-	01	01	05	17	378	250	719	8886
1987	413	827	-	02	-	02	01	16	328	240	502	7419
1988	329	859	-	03	-	01	-	33	246	313	534	7663
1989	309	690	-	02	-	-	-	27	262	345	496	6910

TABLE NO. XVI

Early Infectious Syphilis

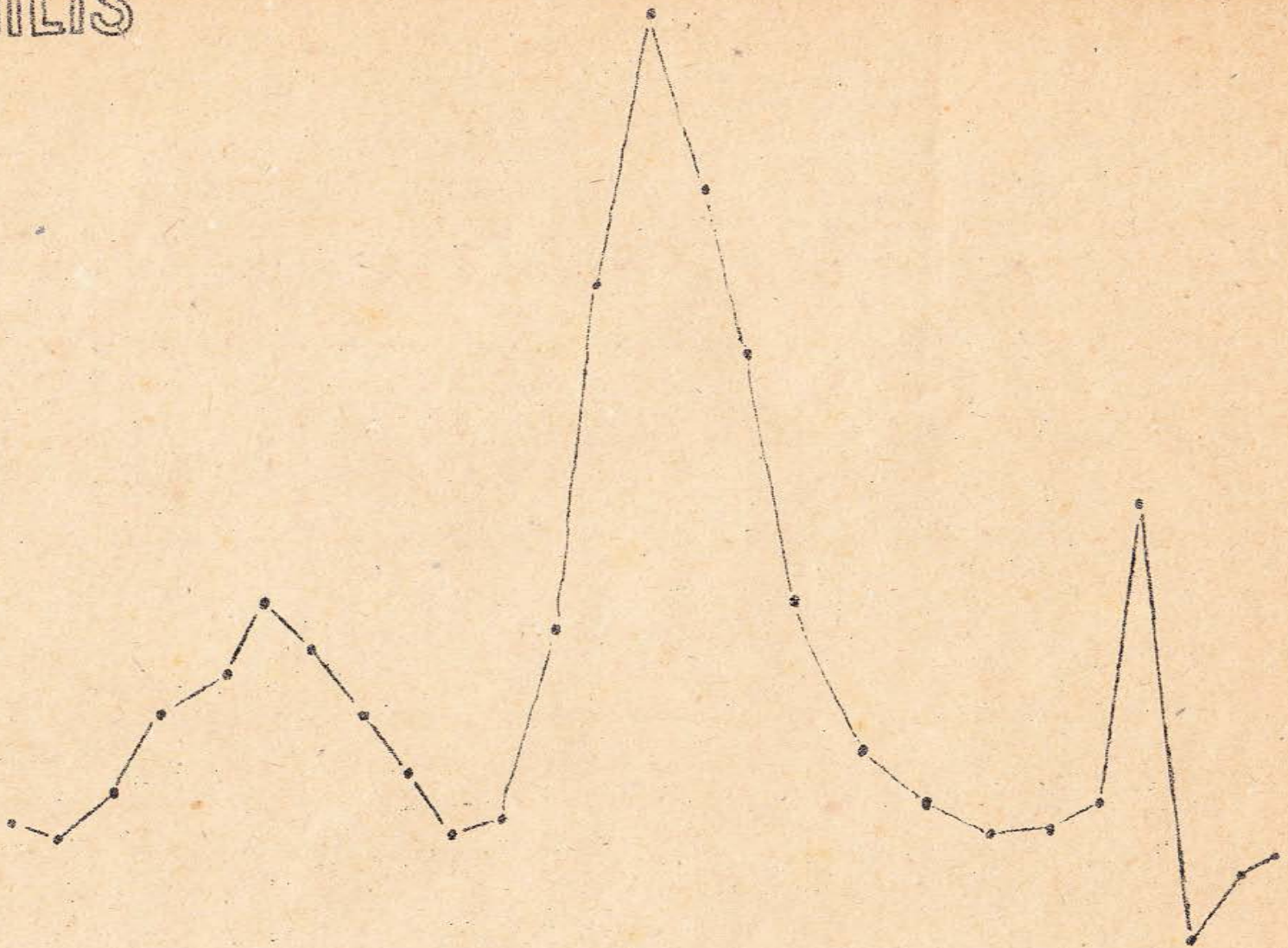
Sri Lanka per 100,000 population

U.S.A. " " "

U.K. " " "

Year	Population	Sri Lanka	U.S.A.	U.K
1964	10,971,000	4.6	12.1	5.5
1965	11,252,000	6.2	12.5	6.9
1966	11,478,000	8.8	11.6	5.5
1967	11,740,000	10.0	10.8	5.3
1968	11,964,000	12.0	10.2	5.3
1969	12,221,000	10.6	9.3	-
1970	12,514,000	8.5	-	-
1971	12,447,000	6.6	-	-
1972	12,951,000	5.2	11.8	-
1973	13,180,000	6.5	12.1	-
1974	13,393,000	11.0	11.9	-
1975	13,496,000	21.5	-	-
1976	13,717,000	30.0	-	-
1977	13,940,000	24.8	-	-
1978	14,181,000	19.2	-	-
1979	14,471,000	12.0	-	-
1980	14,600,000	8.2	-	-
1981	14,850,000	6.5	-	-
1982	15,102,000	5.4	-	-
1983	15,600,000	4.0	-	-
1984	15,609,000	4.1	-	-
1985	15,886,000	4.2	-	-
1986	16,209,000	3.0	-	-
1987	16,329,000	2.8	-	-
1988	16,677,000	3.1	-	-
1989	16,832,000	3.5	-	-

SYPHILIS



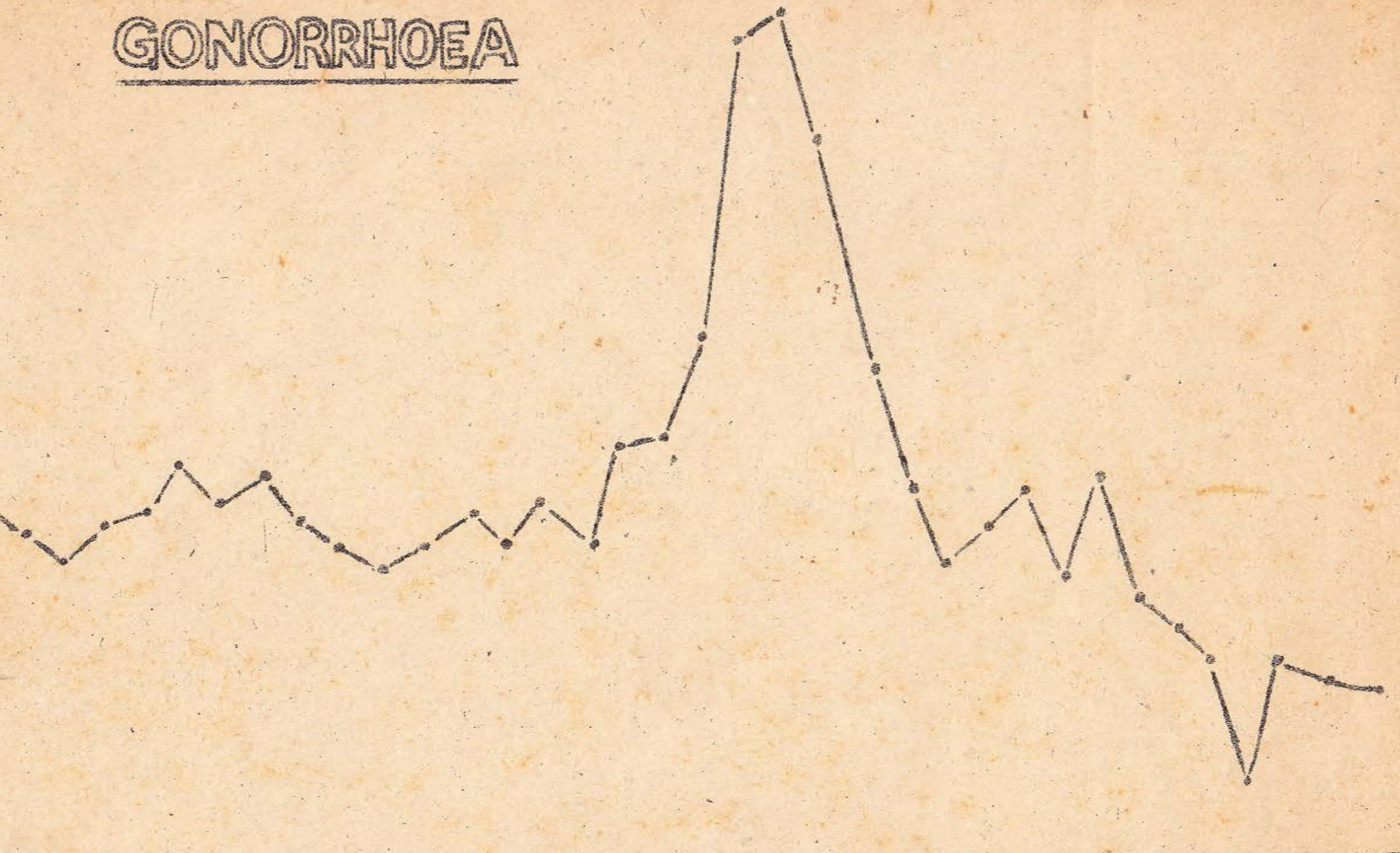
5 6 7 8 9 10 11 12 13 14 15 16 17 18 19 20 21 22 23 24 25 26 27 28 29 30 31 32 33 34 35 36 37 38 39 40 41 42 43 44 45 46 47 48 49 50 51 52 53 54 55 56 57 58 59 60 61 62 63 64 65 66 67 68 69 70 71 72 73 74 75 76 77 78 79 80 81 82 83 84 85 86 87 88 89

TABLE NO. XVII

GONORRHOEARate per 100,000 Population

Year	Population	Sri Lanka	U.S.A	U.K
1964	10,971,000	20.3	150.4	140.3
1965	11,232,000	20.2	160.3	140.5
1966	11,478,000	20.3	170.3	150.1
1967	11,740,000	20.6	190.3	160.2
1968	11,964,000	20.3	210.9	-
1969	12,221,000	20.6	-	-
1970	12,514,000	30.2	-	-
1971	12,747,000	31.0	-	-
1972	12,951,000	30.0	371.0	-
1973	13,180,000	38.0	392.2	-
1974	13,395,000	60.0	404.9	-
1975	13,496,000	61.6	-	-
1976	13,517,000	52.0	-	-
1977	13,940,000	34.5	-	-
1978	14,181,000	26.9	-	-
1979	14,471,000	21.3	-	-
1980	14,500,000	23.6	-	-
1981	14,850,000	23.7	-	-
1982	15,102,000	24.6	-	-
1983	15,300,000	18.8	-	-
1984	15,609,000	18.3	-	-
1985	15,886,000	16.2	-	-
1986	16,209,000	15.4	-	-
1987	16,329,000	13.5	-	-
1988	16,677,000	14.0	-	-
1989	16,832,000	12.4	-	-

GONORRHOEA



5 6 7 8 9 60 1 2 3 4 5 6 7 8 9 70 1 2 3 4 5 6 7 8 9 80 1 2 3 4 5 6 7 8 9